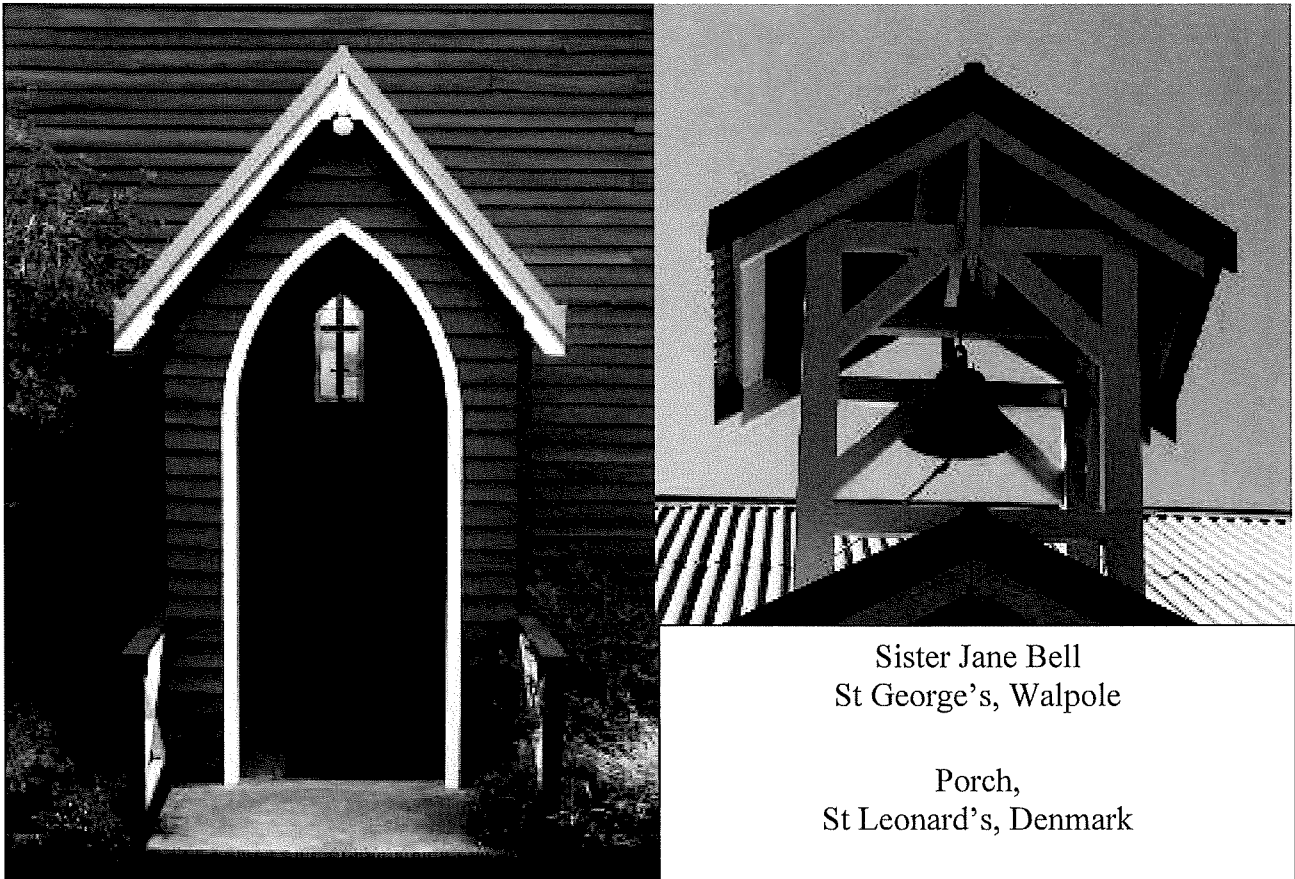


THE DIOCESE OF BUNBURY

PARISH OF DENMARK-WALPOLE PROFILE

Revised August 2024 (ii)



Sister Jane Bell
St George's, Walpole

Porch,
St Leonard's, Denmark

www.denmarkanglican.org.au

In the spirit of reconciliation,
the Anglican Parish of Denmark-Walpole
acknowledges the Traditional Owners
of the land on which this church stands,
the Bibbulmun and Minang people of the Noongar nation.
We pay respect to their Elders, past, present, and emerging,
and honour their spiritual wisdom.

CONTENTS

Part 1 – who we are and our mission

| | <i>Page</i> |
|---|-------------|
| 1. Introduction from churchwardens | 4 |
| 2. Mission Statement | 4 |
| 3. Diocesan Vision | 5 |
| 4. Brief outline of the Parish Council's recent projects & future plans | 6 |
| 5. Brief history of the last 20 years | 7 |
| 6. Who we are - worship, music, approach, recent parish priests | 9 |
| 7. Place of the parish in the community | 11 |

Part 2 – our resources for ministry

| | |
|---|----|
| 8. List of parish leadership | 14 |
| 9. General information about the community | 15 |
| 10. Maps | 16 |
| 11. Information on each worship centre and parish buildings | 17 |
| 12. Parish ministries and groups | 23 |
| 13. Current service programme and statistics | 25 |
| 14. Parish Financial Position & Proposed 2025 Budget | 26 |
| 15. Summary | 28 |

THE DIOCESE OF BUNBURY
PARISH OF DENMARK-WALPOLE
PROFILE

Part 1 – who we are and our mission

1. Introduction from Churchwardens

The Parish is currently seeking a new Parish Priest and would like to offer up to a full-time stipend. We can also provide a four-bedroom, two-bathroom Rectory, parish vehicle and re-location costs. All terms are negotiable. Our first priority is to find the right person for this community. We hope the following information will be of assistance to those selecting that person and to those discerning whether they might find a home in our beautiful part of the world.

We are a country parish with two churches 65kms distance from each other: St Leonard's in Denmark with between 25 and 40 worshippers on Sunday, and St George's in Walpole with between 6 and 12. Both churches regularly welcome visitors on holiday in the area.

Revd. Sally Buckley retires in December 2024 after 5 years as our beloved parish priest. Before her, Revd. Sue Lodge-Calvert served the parish for 8 years, and will assist the parish during the interim period alongside our six licenced lay ministers - two of whom have a licence to preach.

2. Mission Statement

We endeavour to be an expression of God's love in the community

This has been our mission statement for the past 15 years and still truly expresses our values. We are a positive presence in the general community and aim to be good neighbours. Our focus has been on practical support and service (e.g. giving from Mustard Seed Op Shop funds and Emergency Relief service in conjunction with the Community Resource Centre), and upon providing a welcoming spiritual space in which new people do not feel pressured.

Open Doors, Open Minds, Open Hearts

This message is on the sign that greets anyone outside the two churches of the Parish. It suggests we are all pilgrims on a journey and welcomes people to join us. The doors of St Leonard's are indeed open most days, and many people stop by to spend time in the peaceful space. We provide patchwork blankets in the winter months.

3. How the Diocesan Vision is implemented within this Parish:

The **Vision Statement** contained within the Diocese of Bunbury's Strategic Plan 2021-2015 is:

Being God's people for God's world by fulfilling the two great commandments:
to love God with all our heart, soul, mind, and strength,
and our neighbour as ourselves.

In Denmark-Walpole we encourage all members to be involved in their parish as our church rosters show very clearly. Please also refer to section 12 below for the range of activities that take place. Our congregation includes people from a great variety of backgrounds – farming, professional and creative. We have valued administrators, musicians, flower arrangers, and those with a calling to care for others, including 6 lay ministers. We have also invited the wider community to take part in special liturgies and events in creative ways.

While we might be described as a quietly prayerful community, our impact as 'salt and light' in our community is significant. One of our largest missions is The Mustard Seed Op Shop which relies upon 45 volunteers – half of whom are drawn from the wider community with representatives on the management committee. This community supports the ministry of the church and enables our substantial giving to various organisations who aid people in need – locally, nationally and internationally. Perhaps the greatest benefit of the shop is the purposeful social involvement of the volunteers - the shop is open over 6 days and affords interactions with the whole community.

(See also Section 12: Parish Ministries and Section 15: Parish Finances)

In being as Christ to others, we open the doors of faith to our neighbours.

4. Brief outline of Parish Council's recent projects and plans for the future

Over the past decade the parish has put a major effort into catching up on maintenance and improving our properties. This has included:

- Re-roofing St Leonard's church
- Re-roofing St George's church and hall
- Extending St Leonard's hall to include toilets, plumbing to an alternative water treatment unit, a new kitchen, expanded deck area and ramped access. Also repair of foundations and walls. (total cost of \$206,000, completed in 2019)
- Refurbishment of the Rectory, including insulation, flooring, oven, hot water system, air-conditioning
- New toilets at St George's
- New kitchen flooring at St George's
- Air conditioning St Leonard's
- Investigating the replacement of the unstable and infamously uncomfortable pews at St Leonard's with custom designed timber seating to enhance both ergonomic comfort and aesthetics. This is expected to take place in 2025.

Future priorities include

- Renovation of St Leonard's interior, possibly with a heritage grant.
- Possibly revisiting the question of whether to pursue Stage 2 of the hall extension plans, i.e. building of a new space for the Mustard Seed Op Shop and returning the original space to a hall with stage. This might also free space for additional office/counselling space. In recent years, however, active parishioners have felt the need to rest from such projects.

These projects have all been undertaken with a high level of community support and commitment, and without the need to take out loans. Projects have been funded by the parish giving, a bequest, a heritage grant, community donations (eg Denmark Community Windfarm donated \$12,500 for our alternative water treatment unit) and Mustard Seed Op Shop income.

5. Brief history of the last 20 years

The parish was established back in 1898 being made up of various small communities between Denmark and Walpole centred on timber milling and group settlement farms. Like many country parishes it has had a chequered boom and bust history. It was struggling to maintain paid ministry and went in and out of debt until the Mustard Seed Op Shop was opened in 2007.

This stability has enabled the outreach of the parish to gradually increase, as sketched out in the timeline below.

| | |
|-------------|--|
| 2004 - 2009 | <ul style="list-style-type: none"> • Rev. Karen Urquhart arrived in 2004, initially as a deacon before being made priest while in the parish. Her part-time stipend varied as funds and chaplaincy work at the Denmark High School were available • Rev. Kevin Callegari led services in Walpole (at no charge) until 2024 • Rev. Jim Taylor led services in Denmark and Walpole (at no charge) until his retirement in January 2013 • Rev. Karen started Eklektika Community Choir which is still going and supports special services • Rev. Karen started tradition of annual All Souls Day community service by the river which is still lead by the parish and involves local choirs and for past 10 years, the Dragon Boat Club • Mustard Seed Op Shop opened |
| 2010 | <ul style="list-style-type: none"> • Rev. Karen farewelled in January • Interregnum Jan - July: Rev. Kevin Callegari • Rev. Sue Lodge-Calvert commenced July 2010 on a 4 day stipend including 1 day supported by Diocesan Fund for Ministry • Twilight Meditation monthly service commenced • 1st annual lunch to thank Mustard Seed volunteers – prepared and served by parishioners • Emergency Relief program commenced, initially with LotteryWest funds through Anglicare, then with funds from St Boniface Care. Currently administered with the Denmark Community Resource Centre. |
| 2011 | <ul style="list-style-type: none"> • Stipend of 4 days fully supported by parish • Received LotteryWest Heritage grant of \$12,500 to undertake a Conservation Plan for St Leonard's - completed early 2012. • First Blessing of the Emergency Fleet in Walpole • St Leonard's used as a venue for the Denmark Festival of Voice for first time. Special church services continue to take place during the festival. • Rev. Sue and Denmark Primary School chaplain Geoff Hill (a parishioner) established a Breakfast Club |
| 2012 | <ul style="list-style-type: none"> • Stipend increased to 4.5 days • Received LotteryWest Heritage grant of \$61,500 for repair of St Leonard's • Blue Christmas community service with local musicians. Continued in 2013 and 2014 |
| 2013 | <ul style="list-style-type: none"> • Stipend increased to 5 days from July • Rev. Jim Taylor (assisting clergy) retired in January • Heritage work on St Leonard's commenced after delayed Shire approval. • Wednesday 11am service commenced • Mustard Seed mission giving reaches \$20,400 for the year |
| 2014 | <ul style="list-style-type: none"> • Sister Jane Bell installed and blessed. St George's raised funds and installed a Bell Canopy to house a bell donated in 2012. |

| | |
|------|---|
| | <ul style="list-style-type: none"> Heritage work on St Leonard's completed - including new roof, correcting floor subsidence, window repairs, external repair of weatherboards, painting |
| 2015 | <ul style="list-style-type: none"> Stipend increased to 5 ½ days New roof for St George's Draft plans for extension to St Leonard's hall presented to parish |
| 2016 | <ul style="list-style-type: none"> Rev. Sue reduced hours to 3.5 days due to health concerns Alison Kershaw commenced as Stipendiary Lay Minister 2 days in May Walpole Friday Morning Teas commenced Spring Gathering in St Leonard's: revived tradition of flower festival with community participation. Airing of the Quilts at St George's Sound system installed at St Leonard's |
| 2017 | <ul style="list-style-type: none"> 2nd Spring Gathering combined with garage sale and cream teas on the lawn as hall fundraiser Several fundraising events for hall extension, including classical concerts in St Leonard's |
| 2018 | <ul style="list-style-type: none"> Rev. Sue retired in April Interregnum: Rev. Rodger Bull April to Dec 2018; then supply priests including Rev. Sue Lodge-Calvert for extended period Work commenced on Stage One of St Leonard's Hall extension Renovation of Rectory |
| 2019 | <ul style="list-style-type: none"> Stage One of St Leonard's Hall extension completed Rev. Sally Buckley commenced in August 2019 on a 4-day stipend Alison Kershaw returned to non-stipendiary roles. Monthly service of Evening Prayer introduced at both centres. |
| 2020 | <ul style="list-style-type: none"> During the COVID-19 lockdown from March to November, the parish kept in contact through weekly pastoral letters and reflections from Rev. Sally and other communications |
| 2021 | <ul style="list-style-type: none"> Pew Replacement sub-committee began investigations |
| 2022 | <ul style="list-style-type: none"> Parish participated in COP 27 Peel of Bells for the climate |
| 2023 | <ul style="list-style-type: none"> Rev. Sally moved into a private home and Rectory leased out |
| 2024 | <ul style="list-style-type: none"> Pew Replacement sub-committee re-convened and Faculty submitted Air-conditioning installed St Leonard's The Parish said a sad farewell to Rev. Kevin and Okhee Callegari. Kevin led services at St Georges for 15 years without charge. Rev. Sally retired after Christmas services |
| 2025 | <ul style="list-style-type: none"> Rev. Sue Lodge-Calvert assisting in interregnum |

6. Who We Are

Style of Worship

Our services are traditional in style, following the APBA with sung responses. Parishioners take a valued and active part in liturgy through reading and leading prayers. Licenced lay ministers provide assistance, including two that have a licence to preach.

There is also support for para and creative liturgy. Alternative services have been enjoyed, for example, from the Iona Community and the New Zealand Prayer Book, as well as contemplative services such as evening prayer, Taize services (Walpole) and our homegrown Twilight Meditation (Denmark.)

The parish has nurtured a friendly atmosphere. Welcoming and inclusiveness are seen as very important aspects of worship. Parishioners and visitors appreciate the opportunities for social contact after services and at times through the year.

Music

In Denmark, we are blessed with 3 organists and a flute player. They lead a small group of singers who meet briefly on Saturday mornings, then go to local café. This informal choir greatly enhance our worship.

In Walpole, a clarinet player accompanies two hymns with others sung along to recordings. The service with hymns is displayed on an overhead projector.

We mostly select hymns from *Together in Song* for the Sunday services. The monthly Twilight Meditation service (which had a recess in 2024) is unaccompanied and modern chants and songs are selected from a variety of sources such as Taize, Iona, and similar traditions.

Our Approach

As our website says: we are a down to earth community sustained by the seasons and sacraments of our tradition. We also value open-hearted, open-minded enquiry, and those who are new to church can be sure of a warm welcome to continue their spiritual journey in our company.

Over the past 20 years the parish has endeavoured to live by the motto on our signage: *Open Doors, Open Minds, Open Hearts*. We have been successful in attracting Anglicans who have long resided in the area, and new arrivals, as well as many who have returned to church after a long disillusioned absence from Anglican or other traditions.

Recent Parish Priests

Revd Sue (2010-2018) described her approach as theologically liberal yet traditional in terms of liturgy. Through the variety of services offered at different times this progressive and inclusive approach encompassed those of conventional faith, as well as those of a universal spirituality, and indeed those of no faith. This approach was welcomed by the wider community.

Revd Sally also placed great importance upon inclusion and the ministry of all according to their gifts. Her reflection on her time in the parish (2019-2024) is below:

I have really enjoyed my time in the parish of Denmark-Walpole.

I deeply believe in God's love for all people and Jesus' command to love as he loves us. I have been thrilled to see a deepening of understanding of creating a place of hospitality, welcome and acceptance towards newcomers and visitors.

With that in mind, the parish is a place of respect, compassion and support for all who come to us.

I passionately believe in the ministry of all believers and have loved working with the various groups within the parish. I have continued to encourage and hopefully empower the giftedness of others to enable them to exercise their own ministry within the parish where appropriate.

While I describe my theology as 'middle of the road', I have had a varied formation ranging through most of the main groups within Anglican theology (evangelical, charismatic, liberal, Anglo-Catholic and so on), I hope I have created a space where all might feel comfortable to worship, no matter their bias.

This parish continues to surprise and inspire me with their willingness to get involved, their generosity of time, talents and financial aid and their support and encouragement of my ministry. This willing ability to take on positions has allowed me to concentrate on my role as priest and pastor.

I pray that the person who comes after me will be open to and encourage the open inclusiveness and intelligence of the parish and will further the ministry which has been sensitively undertaken by the clergy over the last 20 or more years.

7. Place of the Parish in the Community

We value our place in the communities of Denmark and Walpole. We host a number of events that those outside of the church feel comfortable and welcome to attend, and which the parish overwhelmingly supports. Over the past 20 years, under Rev. Karen Urquhart, Rev. Sue Lodge-Calvert, and Rev. Sally Buckley the community have come to trust that our approach is inclusive, and respectful of difference. We have also co-organised and supported ecumenical and inter-faith gatherings. Local singers, and community choirs are often invited to support these events. Over the years these have included:

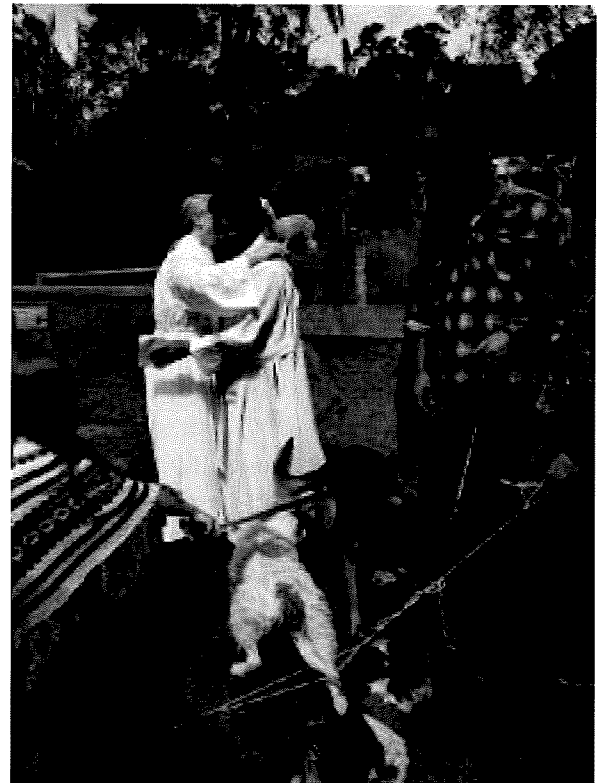
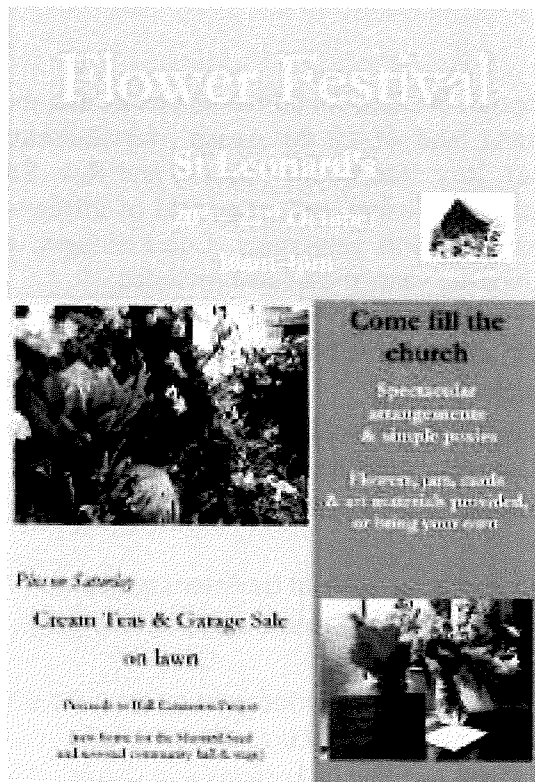
- Twilight Meditations (once a month at St Leonard's) (in abeyance in 2024)
- Blessing of Emergency Services fleet in Walpole (annual, ongoing)
- All Souls Day services by Denmark River (annual, ongoing): supported by the Ekleitika Community Choir and Denmark Dragon Boat Club. Often part of Denmark Arts' *Brave New Works Festival*.
- Offering St Leonard's as a popular venue for the annual Denmark Festival of Voice, and holding special services during the festival (annual, ongoing)
- Blue Wren Lodge nursing home service – offered every Saturday with all traditions welcome
- Some years ago: Easter sand mandalas (e.g. in shape of Canterbury Cross etc), sand labyrinths, or flowering of the cross - and circle dances on the lawn at St Leonard's
- Carol services in conjunction with other denominations (success has varied year by year, no set pattern, sometime this is tied in with the Shire Christmas Parade). We currently focus on advertising a Christmas Eve Family Nativity, followed in the evening by Lessons and Carols
- Blue Christmas services for those who find the season difficult (moving service held 2012 and 2013)
- Spring Gathering: flower festival at St Leonard's where the community help fill the church with flowers (held 2016, 2017, 2018, 2019)
- COP27 – members of the community joined us for nationwide bell-ringing in 2022.
- World Day of Prayer – rotated among the denominations in the area
- Study groups (at one time called Holy Book Club), held periodically and attracting people from the Uniting Church and Quaker community
- Birthing the Divine: Advent 2017 retreat day, led by Rev. Sue and Alison Kershaw, attended by 30 people – mostly from wider community, focused on various texts from the OT and NT, as well as several Dead Sea scrolls included in the 'New New Testament.'
- Aramaic Advent: a 2-day retreat in 2009, led by Rev. Karen and Sufi teacher Vivienne Robertson - learning the chanted cycle of the Lord's prayer in Aramaic, including a special Sunday service. Approx. 20 people representing a cross section of various faith groups in Denmark.
- Interfaith Peace Gathering: usually held ANZAC Day organised by Quaker Basil Schur.

Support for such services and events shows the potential to tap into a much wider support base with an inclusive sensitivity.

Mustard Seed Op Shop

Our single largest community outreach is The Mustard Seed Op Shop with approx. 45 volunteers – more than half of whom are drawn from the wider community and are happy to support the work of the church and raise funds to aid people in need – at local, national and international levels. We also provide free goods if needed and supply the Community Resource Centre with emergency relief vouchers. The social interaction of volunteers and shoppers is a mission in itself. *See also section 12*





Above right: Joint Blessing of Animals with the Catholic Church

Right: Blessing of the Emergency Fleet, Walpole



St Leonard's has beautiful acoustics and a warm ambience appreciated by the wider community. The church is sometimes offered for concerts as a community service, and sometimes we charge a fee.

Above: Mixed Mob, Festival of Voice service

Right: St George's College Choir





Easter sand crosses and labyrinths
 Less energy has been available in recent years but might be revived.

clockwise:

- Decorating the cross
- Dancing around a Nevern cross on Easter morning
- Local musicians invited to create and sing about the Easter labyrinth



The Brave Journey of
ALL SOULS
 a service to remember
 those who have died

Casting flowers
 Poems, prayers, songs
 with Eklektika choir
 & Denmark Dragon Boat

Sunday-5th Nov 11am
 Berridge Park (near the bridge)
 - hosted by St Leonard's Anglican Church - all traditions welcome

photo: Mike Hemmings

Part 2 – Our Resources for Ministry

8. List of Parish Leadership

| | |
|---------------------------------|---|
| Parish Priest | The parish is looking to engage a Parish Priest up to full-time |
| Assisting Retired Clergy | Rev. Sue Lodge-Calvert paid on supply |
| Licensed Lay Ministers | <ul style="list-style-type: none"> • Alison Kershaw (liturgical, preaching, pastoral, and funeral ministry) Nursing home services • Sally Prickett (liturgical, pastoral, and funeral ministry). Nursing home services • Harold Luxton (liturgical, preaching, pastoral and funeral ministry – Walpole) • Tom Sheard, Jane James, Jan Pattinson (liturgical ministry) |
| Wardens | <ul style="list-style-type: none"> • Tom Sheard • Tine Adams • Harold Luxton |
| Secretary | Marion Jamison |
| Synod Reps | Alison Kenworthy Bev Dixon <i>Alternate Synod Reps:</i> Marion Jamison, Tine Adams |
| Treasurer | Harold Luxton |
| Parish Councillors | Jan Hill (Mission Secretary) Jane James (YouthCARE representative) Alison Kershaw Jan Pattinson Bev Dixon (Health and Safety) |
| Mustard Seed Op Shop Management | Sally Prickett (and Safe Church contact) |
| Musicians | Tine Adams (organ) Carolyn Bentley (organ) Marion Jamison (organ) Jane James (flute) |

9. General information about the Community (incl. 2021 Census Data)

Population: Denmark Shire has a population of 6,310, Walpole (in the Shire of Manjimup) has 336.

Median age is 50 as opposed to 38 across WA and nationally.

Families: 1,613 (see schools below)

Ethnicity: predominantly Australian / British / European. 77 Indigenous

Religious Affiliation: None 58.4% (as opposed to 38.4% Australia wide), Not Stated 11.3%; Anglican 10.8 (down from 15% in 2016), Catholic 7.7%, Uniting Church 1.7%. (2021 Census Data)

[There are several other congregations, the largest being the Baptist Church currently building a new church, Seventh Day Adventist, Jehovah's Witness, Quaker, Baptist, Harvest (evangelical plant) which merged with Denmark Family Church (Pentecostal style).

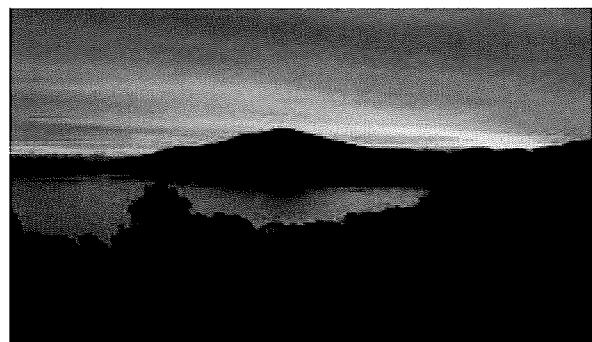
The parish has most interaction/intersection with the Uniting Church, Quaker, and Catholic communities.

Employment: main areas are agriculture (dairy, beef, viticulture), tourism, education, and health.

Schools: Walpole Primary School, and in Denmark: Denmark High School (to year 12), Denmark Primary School, Golden Hill Steiner School (primary), Little Whalers (pre-primary), Denmark Nature School (pre-primary and primary), Denmark Agricultural College. Also, Great Southern Grammar is an Anglican school in Albany.

Music & Arts: There is a very healthy arts and music scene, with Denmark Arts Inc. organising major festivals such as The Festival of Voice, markets, workshops, etc. There are several community choirs and live music venues. St Leonard's provides a venue for some arts events, and has contributed events to the arts calendar.

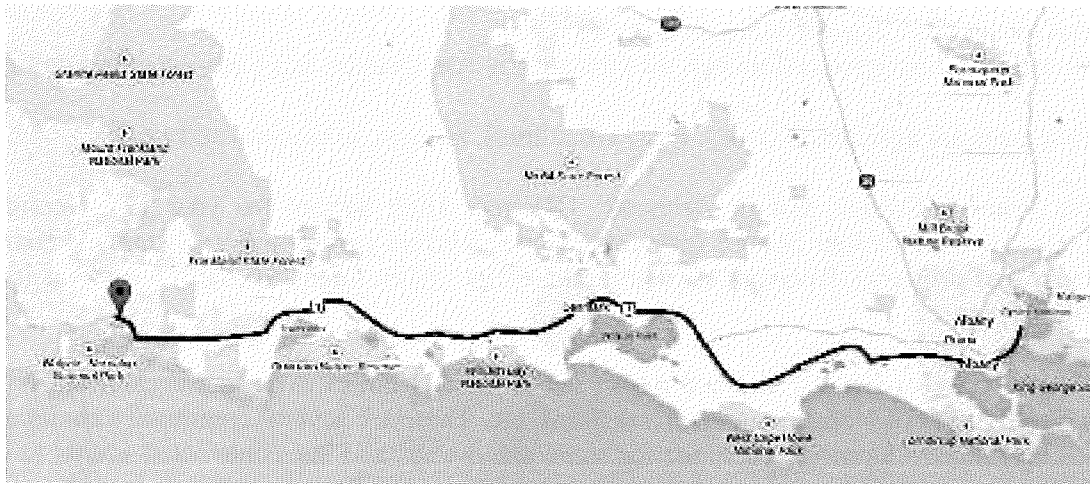
Environment: Being in a beautiful and varied landscape with forest, coast and rural environments, and surrounded by national parks, there is much community interest in environmental and sustainability issues, especially in a drying climate.



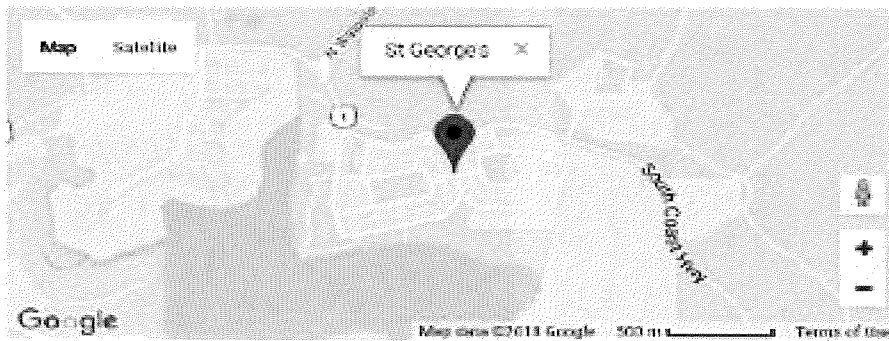
10. Map – showing location of Parish of Demark-Walpole

General Area – Albany to Denmark 57 km. Denmark to Walpole 65k. Approx 45 min. each way.

Neighbouring parishes include Albany (St John's), Oyster Harbour (Living Water, Albany) and Mount Barker (All Saints)



St Leonard's
cnr of Strickland & Mitchell Sts, Denmark



St George's
4 Vista St (cnr Pier St), Walpole

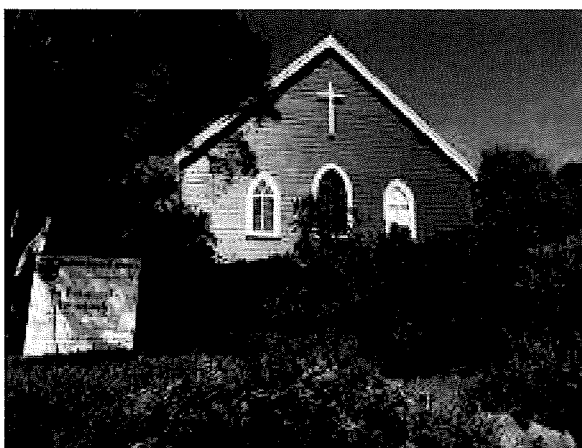
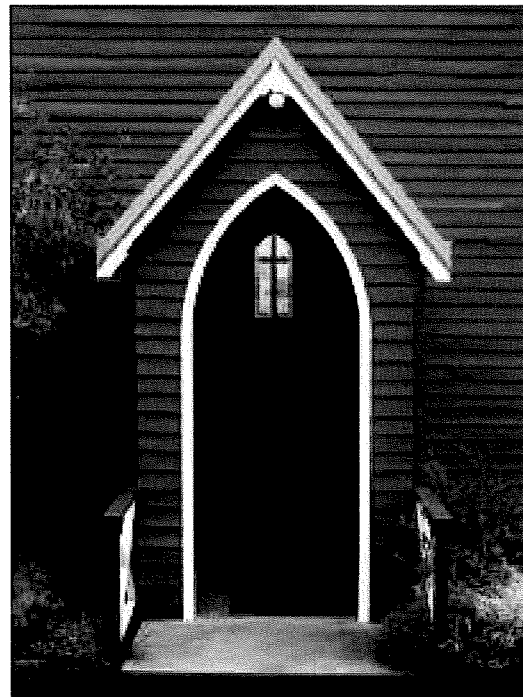
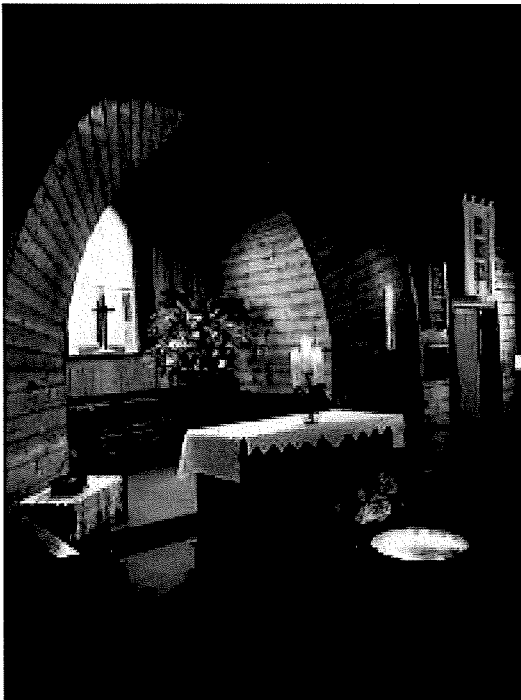
11. Information on each worship centre and Parish buildings

Denmark

St Leonard's

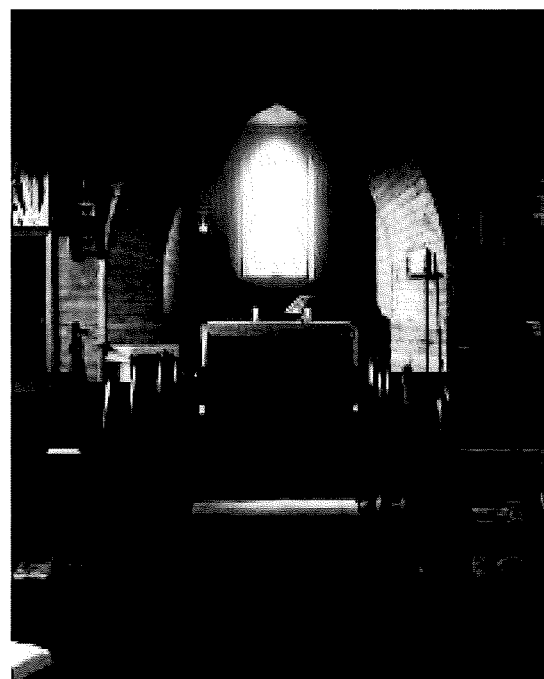
St Leonard's was dedicated in 1899. Designed by Perth architect Percy Harrison, and completed by voluntary labour on its present site. The church is framed in the local hardwood, karri, and clad externally with karri weatherboards. Internal walls and ceiling linings are in Baltic pine. Match-boarding and the floors are of sawn and hand adzed hardwood boards. The interior features an unusual Gothic arch in the sanctuary. The detailing and use of Baltic pine are said to reflect the influence of Norwegian mill workers. St Leonard's has a beautiful ambience and warmth due to the timber lining.

It seats approx. 100 with room to squeeze more in when needed!



Above: view from the main street, Strickland St

Right: we expect to replace the uncomfortable and unstable pews in 2025 with finely made timber chairs and benches



St Leonard's Hall

The hall (along with St George's Hall in Walpole), was built by parishioners during the ministry of Rev. George Kingston between 1954 and 1956.

The hall and stage area are currently occupied by the Mustard Seed Op Shop.

In 2019 the foundations and walls were repaired, a new kitchen and toilets were installed along with plumbing to an alternative water treatment unit.



Most morning teas are held on the warm north facing deck. Opening celebrations in 2019

The lawn area is an asset and in recent times has been used for Easter celebrations, Parish gatherings under a marquee, and a story-telling yurt during the Festival of Voice. It is also a place where passers by can relax, and children can play while parents visit the op shop.



The Family Nativity is sometimes held on the lawn

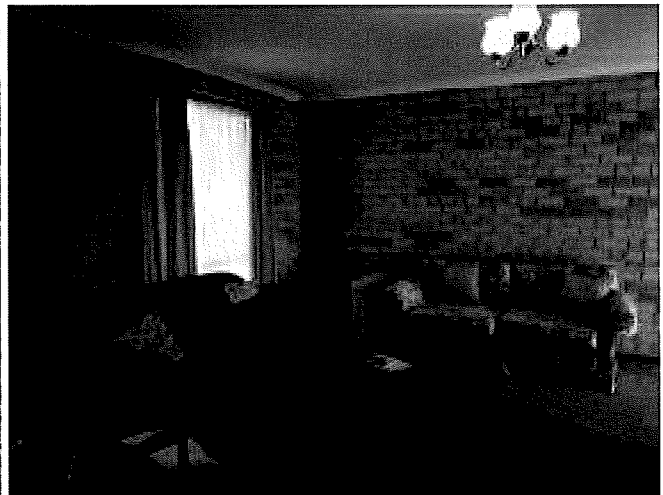


Mustard Seed sorting room in the former hall with stage. Plans to build a new shop and restore the hall are on indefinite hold.



The Rectory at 5 Brazier St is just around the corner from St Leonard's in the centre of Denmark. It replaced the first rectory which still stands near the corner of Horsley and Scotsdale Rds, and was blessed in 1992. A \$16,000 upgrade of the rectory ready for the new incumbent was completed in 2018, including some new floor coverings, re-painting inside and out, refreshing window dressings, upgraded plumbing and a new hot water system. Since then roof insulation, air-conditioning and external security doors have been installed. It is currently being leased out.

- Brick and tile
- 4 bedrooms with built-in robes
- 2 built-in hall cupboards
- 2 bathrooms (including en suite)
- Large front sitting/reception/dining room with hatch to kitchen. This has sometimes been used for meetings and social occasions
- Smaller north facing dining / family room adjacent to kitchen with wood fire, opens onto patio.
- Office with separate front entrance
- Double garage off back lane, plus front driveway



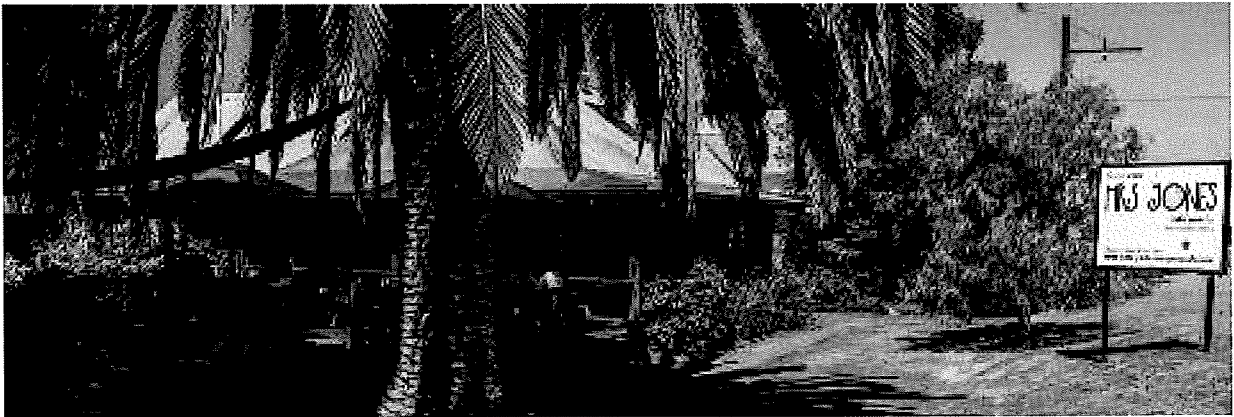


- Clockwise from top:
- Ensuite and 2nd bathrooms
 - Office with entrance near front door, and internal door
 - View from main bedroom
 - View across street
 - View over back fence into town



The Rectory is within walking distance of St Leonard's and the centre of town with shops, schools, amenities, and many cafes.

Also within walking distance is a beautiful park with a walk trail around Denmark river. Beaches are a 10 minute drive away.

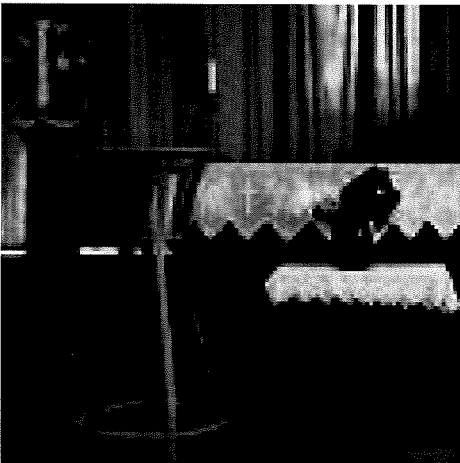


Walpole: St George's

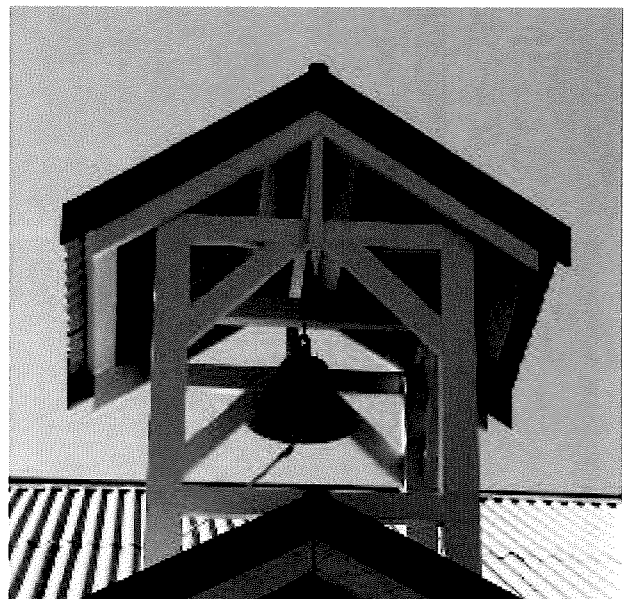
A Mission House was relocated from its original 1928 position in the midst of the Tinglewood and Hazelvale Group Settlement Schemes to the Diocesan property in Walpole (where St George's is now). It was used by Sister Jane Anderson and Deaconess Lilla Fleck who helped the Parish provide on-site ministry to the isolated Group Settlements west of Denmark (funded by the Colonial and Continental Church Society: a forerunner of Bush Church Aid Society). It was dedicated by Bishop Leslie Knight on 12 April 1942 and used there until it was sold in 1968.

St George's, along with the church hall in Denmark, was built by parishioners during the ministry of Rev. George Kingston between 1954 and 1956. St George's Church Hall was dedicated by Bishop Donald Redding on 5 June 1956. Under Revd Karen Urquart's leadership, It was re-dedicated as a church by Bishop David McCall on 23 April 2009 (St George's Day).

It comprises an open space and a stage which is usually curtained off, and a kitchen. This flexible space is used by community groups, such as Weight Watchers.



The font was made by parishioner and retired assisting priest, the greatly missed Rev. Jim Taylor



The Sister Jane bell was blessed in 2014. The bell was donated in 2012 and the Walpole community supported the parish in raising funds for the bell canopy. It is named after Sister Jane Anderson, a nurse missionary who arrived from Ireland in 1928 (see above.)

12. Parish ministries and groups

| | |
|------------------------------------|--|
| Emergency Relief | The parish provides emergency relief in the form of \$6,000 pa supermarket, petrol and gas bottle vouchers. Funds for this come from St Boniface Care. This is administered via the staff at the Community Resource Centre which is open 5 days a week. The Mustard Seed also contributes clothing, blankets and other items required by those in need. |
| Mustard Seed Op Shop | The mission of the Mustard Seed is multi-faceted: <ul style="list-style-type: none"> • Opened in 2007 to enable the parish to survive financially, it has grown from strength to strength and now supports ministry by providing over 60% of parish income. • It has enabled the parish to donate generously - between 10% and 30% of profit to various mission and humanitarian causes both locally and globally. It is an important social hub for 45 volunteers (over half of whom are drawn from the wider community) <i>See also below.</i> • It provides an important social service in the provision of affordable clothing and household goods. • It plays a significant part in caring for creation as 99% of all items donated are recyclable, extensive volumes of cotton rag are sent for recycling, and the shop is plastic bag free. Excess stock is sent to the Denmark Tip Shop, Reformed Church op shop in Albany, and Parish of Katanning Op Shop. |
| Blue Wren Lodge | Each Saturday a service is held in the Denmark Hospital nursing home. This is either a communion service led by a priest or communion by extension offered by one of 2 lay ministers. A Uniting Church minister is also on our roster. |
| Home Visits and Extended Communion | Visits are made by priests and lay ministers as needed. Communion / extended communion may be offered. |
| Study groups | Usually held over Lent and Advent, with an invitation often extended to the Uniting Church and Quaker community. These usually focus on a book, or Diocesan study. |
| Mother's Union | This branch has officially closed though a small number participate in MU activities in the area. |
| Prayer Circle | Currently 21 parishioners share a special ministry, holding in prayer those known to be in need of support. Updates are shared by email, printed updates, or via phone chain. |
| Eklektika Community Choir | This community choir was started by Rev. Karen Urquhart in 2007. The choir, now about 40 strong represent a wide cross section of the community. Although no longer led by our priest, it includes a few parishioners, and the choir are keen to support special events such as All Souls by the River, Festival of Voice services. They have also sung at a funerals, and other special services as asked. |

Mustard Seed



The close knit team of 45+ volunteers – more than half are from the wider community. The shop is a social hub for vollies and shoppers, and provides affordable or free goods for those in need.



Sales have risen from \$23,000 in 2008 to \$145,692 in 2023.
10 – 30% is donated each year.

Through Mustard Seed and parishioner offerings, \$152,391 has been donated to local, national, and international causes between 2014 and 2023.

The parish has helped purchase two horses for Denmark Horsepower – helping people heal through contact with horses.

20+ bags of excess stock or cotton rags sent to other recycling outlets per week.

Plastic Bag Free

Mustard Seed vollies in op shop fashion for the Shire Christmas Parade



13. Current Service programme and a few statistics

Number on Parish database: 75 (65 in Denmark, 10 in Walpole)

Number on Denmark Roster (teas, flowers, greeting, reading, prayers, llms, clergy): approx. 28

St Leonard's Denmark:

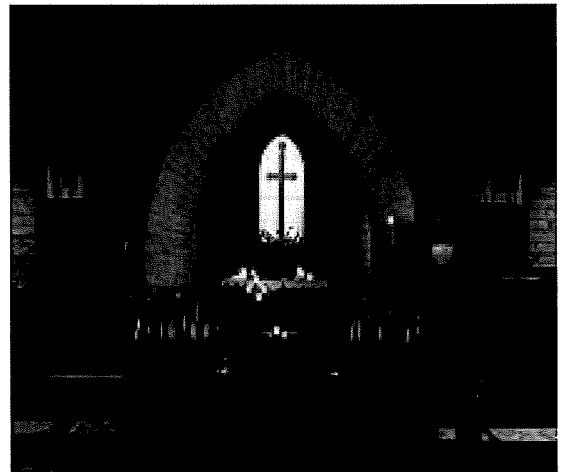
- Holy Communion most Sundays / Morning Prayer: St Leonard's 9.30am (*attendance 25-40 with approx. 100 at Easter and Christmas*)
- Weekday Eucharist: St Leonard's 1st Thursday of the month, 2pm (*attendance 5-12*)
- Evening Prayer: St Leonard's last Sunday each month, 7pm (*attendance 12-15*)
- Choir Practice: St Leonard's Saturday 10.30-11, then coffee.
- Twilight Meditations – monthly, on hold (*attendance 6-12*)
- Saturday 9.30am Blue Wren Lodge nursing home – Holy Communion or Communion by Extension. (*attendance 4-8*)

St George's Walpole:

- Sunday 10am. Parish Priest presides at service of Holy Communion once a month. At other times: Morning Prayer or Communion by Extension led by Licenced Lay Minister, or Holy Communion when assisting priest is available. (*attendance 6-12 with approx. 25 at Easter and Christmas*)

Other Services offered over the years:

Family Nativity (Denmark)
Lessons & Carols (Denmark)
Shrove Tuesday & Ash Wednesday
Maundy Thursday with washing of feet (Denmark)
Good Friday
Easter Dawn (Denmark)
Festival of Voice – Sunday morning & Vespers with guests
Blessing of Animals
All Souls Community Service by the Denmark River
Walpole - Blessing of Emergency Fleet
& Thanking of Volunteers



The Family Nativity Service is popular with visitors and an opportunity to invite local families to dress up and participate.



Evening Prayer and Twilight Meditation

14. Parish Finances

The parish is currently in a stable and healthy financial state, as our recent Annual Reports on the website demonstrate. We are very confident of supporting a full-time stipend (negotiable) and all related expenses.

Income from the Mustard Seed Op Shop has steadily grown over the past 17 years to \$81,000 in 2016 and \$145,700 in 2023. Offerings in 2023 amounted to \$41,748.

The Parish's Statement of Financial Position 31 July 2024 is below. This shows that on 31 July 2024, the Parish had \$97,706 available on-call and \$253,057 in a Term Deposit Account maturing 6 December 2024.

The largest single expense in the near future is replacing the pews (est \$150k.) Parish Council intends to set up a Capital Works Fund: Saint Leonard's Pews Fund (SLPF) to receive donations. Parish Council will apply to Bishop-in-Council to grant an exemption from Diocesan Assessment on donations received into this Capital Works Fund.

Statement of Financial Position 31 July 2024

| Category | Ac # | Account Name | 1 Jan 2024 | 31 Jul 2024 |
|---------------------------------------|-------|------------------------|------------------|------------------|
| ASSETS | | | | |
| Current Assets | | | | |
| | 14673 | ACF Operating Account | \$21,233 | \$22,501 |
| | 14674 | ACF Cash Management Ac | \$57,825 | \$75,205 |
| | 14700 | ACF Term Deposit Ac | \$203,590 | \$253,057 |
| | | Sum ACF accounts | \$282,648 | \$350,762 |
| | 14800 | Undeposited Funds | \$4,068 | |
| | 14810 | Accounts Receivable | \$1,915 | \$295 |
| | 14910 | Energy Bill Relief | \$1,975 | \$1,739 |
| TOTAL ASSETS | | | \$290,607 | \$352,796 |
| LIABILITIES AND EQUITY | | | | |
| Liabilities | | | | |
| | 21100 | Accounts Payable | \$162 | \$0 |
| | 21130 | HEF Interest Free Loan | \$1,250 | \$0 |
| | 21270 | Emergency Relief Fund | \$2,020 | \$5,120 |
| | 21271 | MS Shop Equipment Fund | \$460 | \$351 |
| | | Total Liabilities | \$3,892 | \$5,471 |
| Equity | | | | |
| | 31000 | Retained earnings | \$222,377 | \$286,715 |
| | | Current Year | \$64,337 | \$60,610 |
| | | Total Equity | \$286,715 | \$347,325 |
| TOTAL LIABILITIES & EQUITY | | | \$290,607 | \$352,796 |

Preliminary Budget 2025

With Provision For a Full-Time Parish Priest

Preliminary Indicative Budget
: 2025 Edition 1.0
Compared to Actual for 12 Months to 30 June
2024

| Account | Prelim Budget for 2025 | Actual 12 months to 30 Jun 2024 |
|---|------------------------|---------------------------------|
| Mustard Seed Op Shop Revenue | 150,000 | 151,585 |
| Offertory and other donations | 51,000 | 51,946 |
| Interest on Deposits | 9,000 | 9,328 |
| Rectory Rental | 1,920 | 23,040 |
| TOTAL PREDICTED/ACTUAL INCOME | \$211,920 | \$235,899 |
| Stipend parish priest (1 FTE) | -87,180 | -53,636 |
| Housing Allowance | 0 | -12,264 |
| Motor Vehicle Allowance (100%) | -9,000 | -8,550 |
| Living MOU Utilities | -1,500 | -638 |
| Supply service fees | -1,800 | -1,496 |
| Other Ministry Costs | -1,200 | -1,754 |
| Cleaner ¼ | -2,220 | -1,088 |
| Diocesan Assessment | -25,000 | -18,084 |
| Repairs and Maintenance | -6,000 | -12,228 |
| Insurance | -6,600 | -5,505 |
| Utilities | -3,600 | -1,791 |
| Advertising | -2,000 | -1,919 |
| Rates and Taxes | -1,500 | -2,557 |
| Communication and Information | -3,000 | -1,271 |
| Mission Giving (PC Allocations) | -14,400 | -12,442 |
| Mustard Seed Op Shop Costs | -12,000 | -9,165 |
| Rectory Rental Fees | -500 | -2,374 |
| TOTAL PREDICTED/ACTUAL EXPENDITURE | -\$177,500 | -\$146,762 |
| PREDICTED/ACTUAL RETAINED EARNINGS | \$34,420 | \$89,137 |

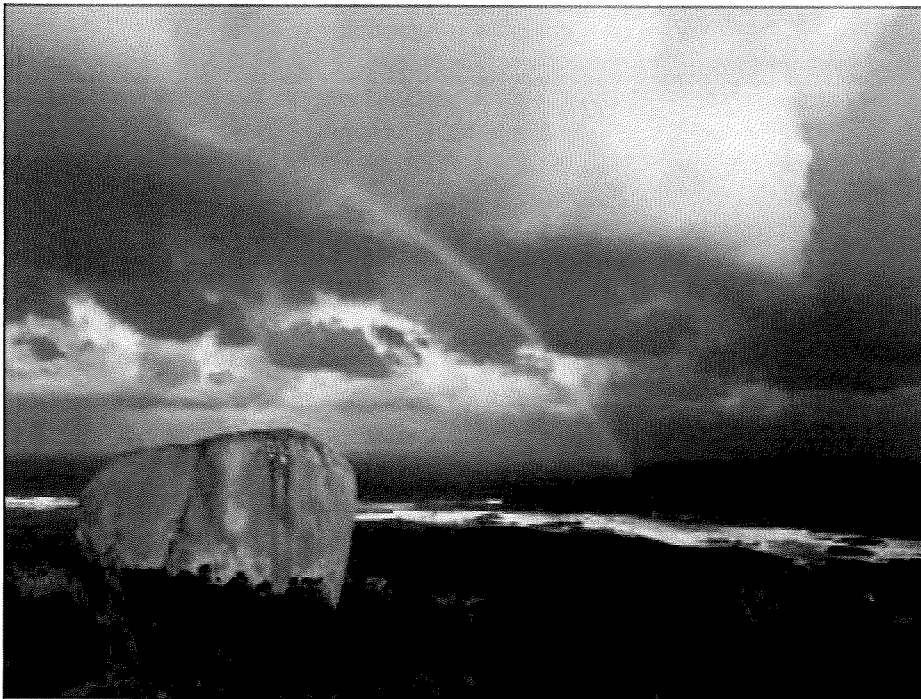
15. SUMMARY

Our parish is active, well-run, and placed in a lively, creative community, with potential to grow.

We have been reasonably successful in attracting Anglicans moving to the area and attracting people back to church after many years absence. We have, however, found it difficult to attract younger people, and the generations who might help the church evolve are missing – though two younger people have recently become involved, and we sometimes host young visitors who are passing through, or the curious.

There is reason to hope, however, as community services, involving invited choirs and musicians, are well attended. It is hoped that our new parish priest will tap into Denmark's healthy community spirit and build upon the outreach services and activities that have already taken root, as well as finding new ways to speak to the many spiritual seekers of all ages attracted to the Denmark and Walpole region.

While we are hoping for a priest to encourage deep discernment about future directions, we are also hoping for someone to encourage us in our care for one another and enrich our faith life. As we have learnt from the growth of our Mustard Seed Op Shop, from a small but strong core, all manner of things might grow and flourish.



a winter's day, Tower Hill, William Bay